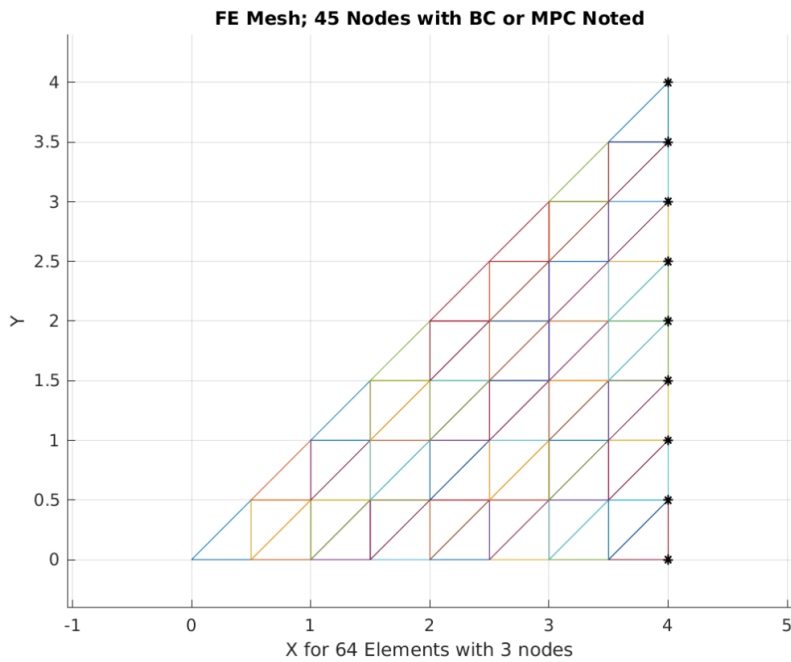
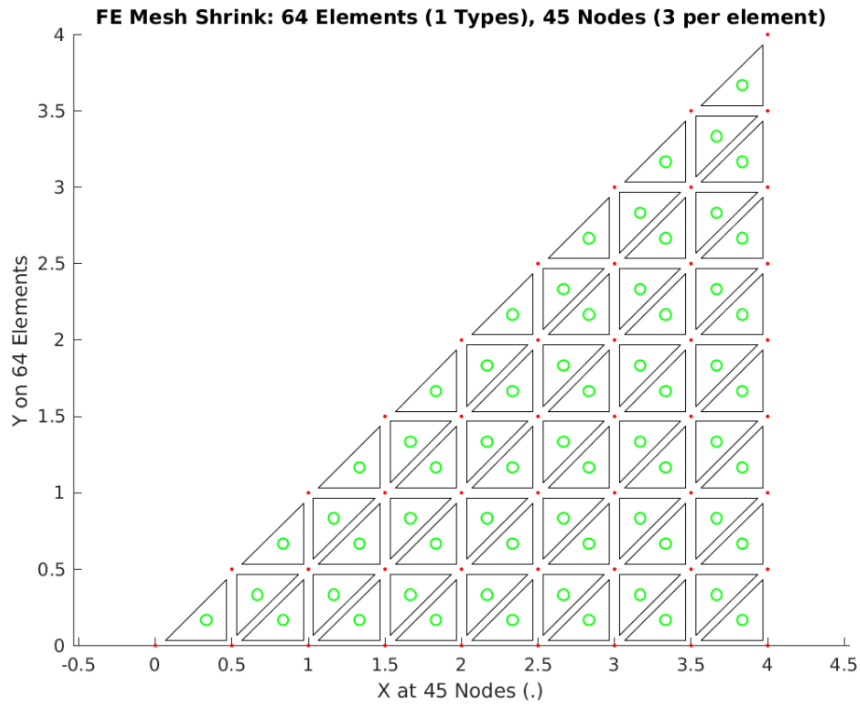
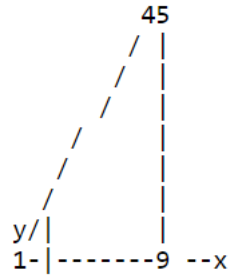


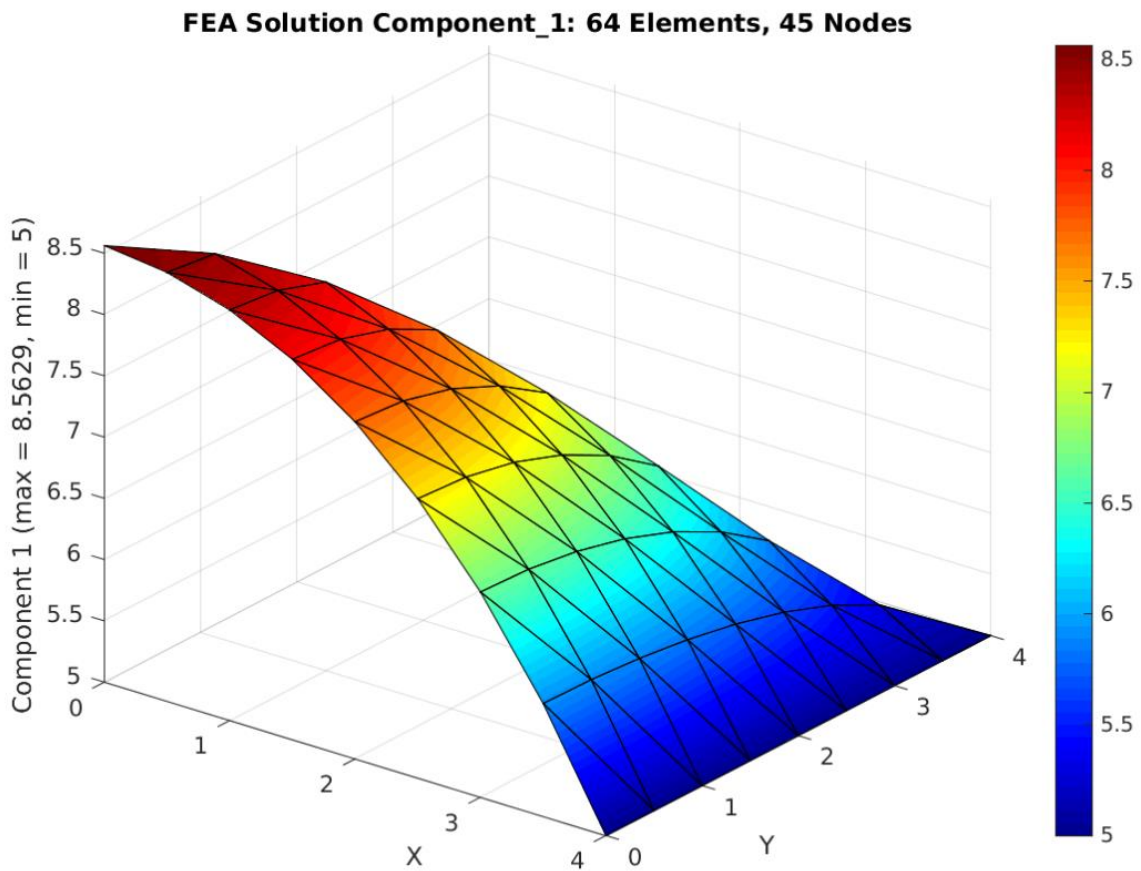
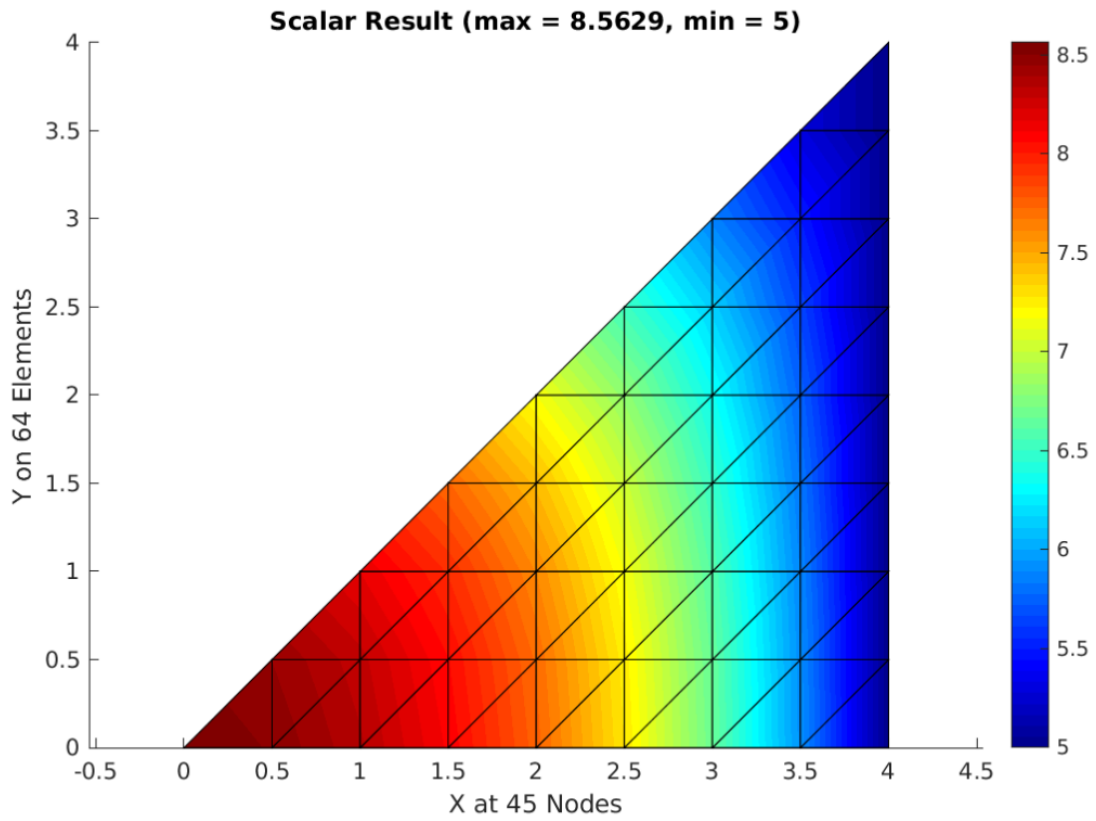
```

===== Begin File Remarks =====
Conduction example of Section 12.4
K_x = K_y = 8, Q = 6,
L_1_9 = L_9_45 = 4, Thickness = 1
with 1/8 symmetry, so natural BC on
edges 1_45 and 1_9 is q_n = 0
EBC on edge 9-45 is T = 5
K_x T_x,xx + K_y T_y,yy + Q = 0

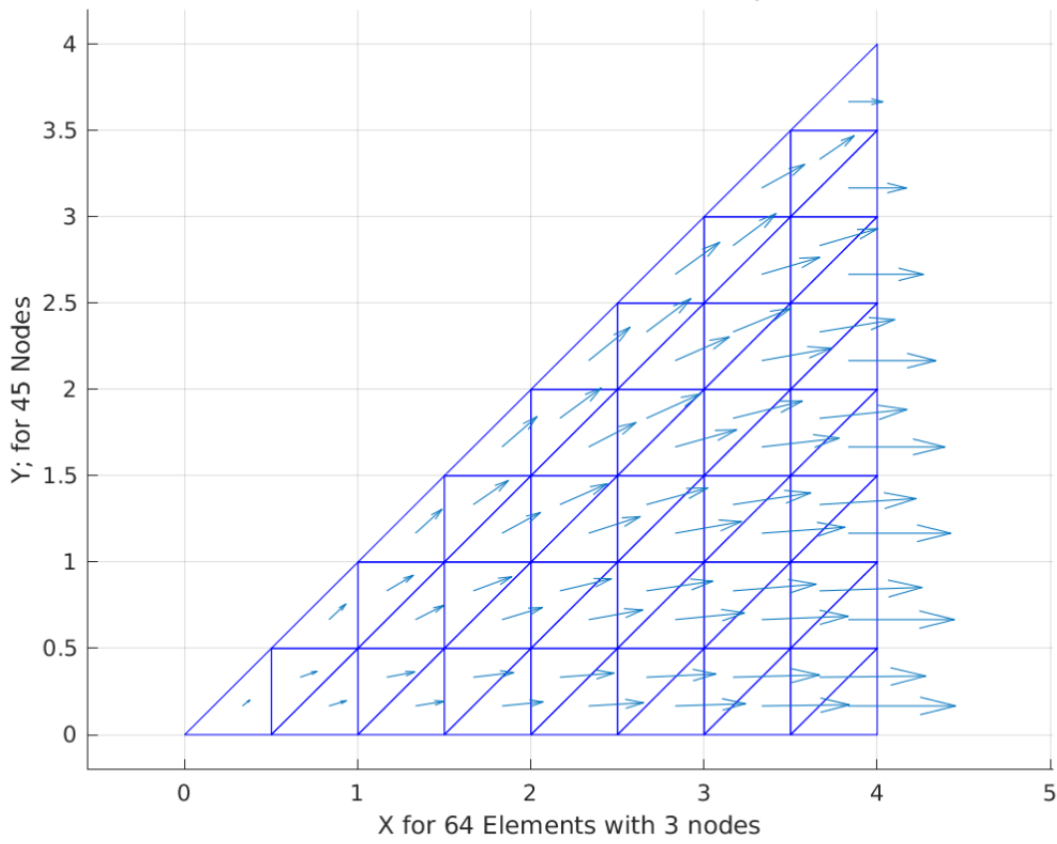
Other edges are symmetric. NBC=0
===== End File Remarks =====

```





**Element 2-D Flux Vectors at 64 Gauss Pts, max = 1.474e+01**



**Nodal SCP Averaged 2-D Flux Vectors, max = 1.59e+01**

